



## Drive Trust Alliance SED Software for Windows Installation Instructions V1.2.0

Congratulations on your acquisition of the Self-Encrypting Box. This document contains information to help you get started.

### Contents

Contents .....	1
A Note about SEDs.....	2
Software .....	3
Installation on Windows.....	3
Drive Trust Alliance Software .....	11
Using SEDControl.....	12
Using SEDAccess .....	15
Help and Feedback .....	16

### Contents

Your Self-Encrypting Box comes with the following items:

- A 250GB Crucial MX200 Self-Encrypting Drive
- A StarTech USB 3 to SATA cable
- A Drive Trust Alliance Poker Chip (not valid at casinos)
- Drive Trust Alliance SED Software (on the drive)
- A Drive Trust reminder card in case you lose the software



*Figure 1: 250GB Crucial MX200 Drive*



*Figure 2: StarTech USB 3 to SATA Cable*



*Figure 3: Drive Trust Alliance Poker Chip (Not Valid In Casinos)*

## A Note about SEDs

If you are not already familiar with SEDs, here is a brief description of how they work.

### Hardware Encryption

First, self-encrypting drives use hardware encryption. From the time of manufacture and forever afterwards, SEDs are already encrypting all data written to the drive. But, even though the data is always encrypted, it is not protected until a password is set to unlock access to it. You should use a good password that you can remember.

Unlike software encryption the drive is self-protecting and keeps no record of the password except the ability to know if you use the right password. Also unlike software encryption, the encryption



key is not available to any software. Finally, there is no significant performance impact or power impact on your batteries.

## Software

The Drive Trust Alliance SED software has been preinstalled on the SED in your Self-Encrypting Box.

It is also available at <http://www.drivetrust.com/apps>.

## Installation on Windows

(1.) Connect the SATA connector on the cable to the Crucial MX200 drive.



*Figure 4: Connecting the SATA connector on the cable to the Crucial MX200 Drive.*

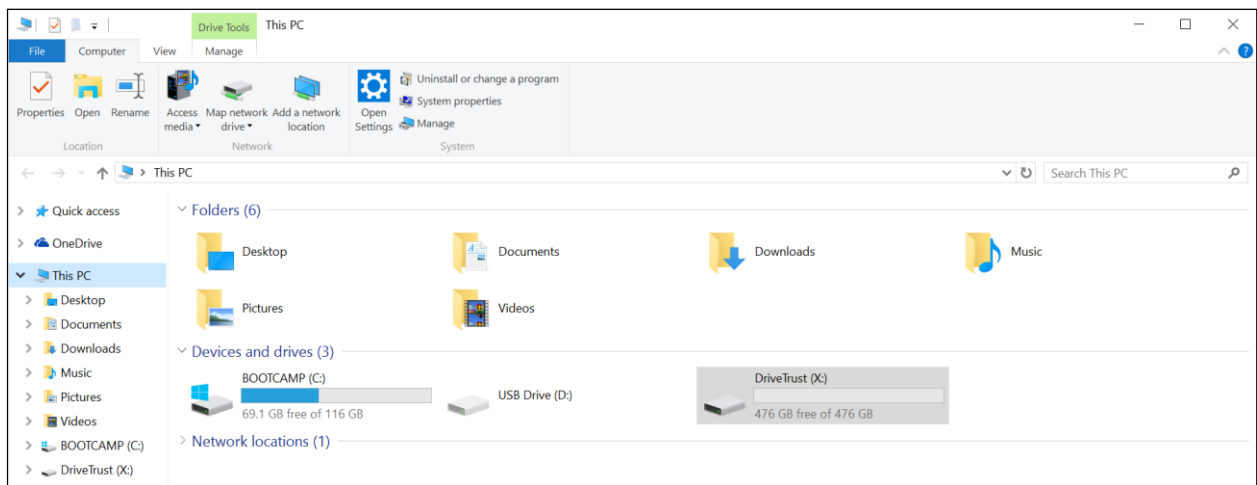


(2.) Plug the USB connector of the cable into your computer



*Figure 5: Connecting the USB 3 connector on the cable to the computer.*

(3.) Upon connection, the drive will appear under This PC as a drive called `DriveTrust`. Double-click on the icon to bring up the File Explorer window. This has already been formatted as an exFAT file system so it can be read on the Mac and Windows.



*Figure 6: External drive listed under This PC with the name DriveTrust.*



[Drive Trust Alliance](#)  
SED Software for Windows  
Installation Instructions  
V 1.2.0

(4.) Click on the DTA folder in Finder.

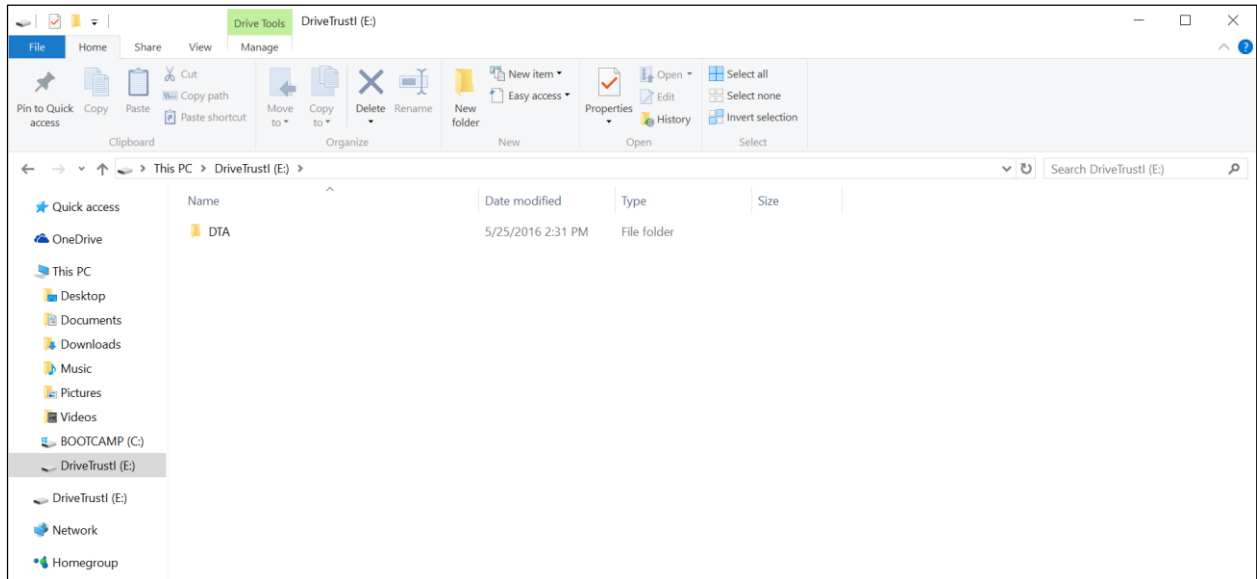


Figure 7: DTA Folder.

(5.) Two folders are visible, Mac and Windows. Open the Windows directory.

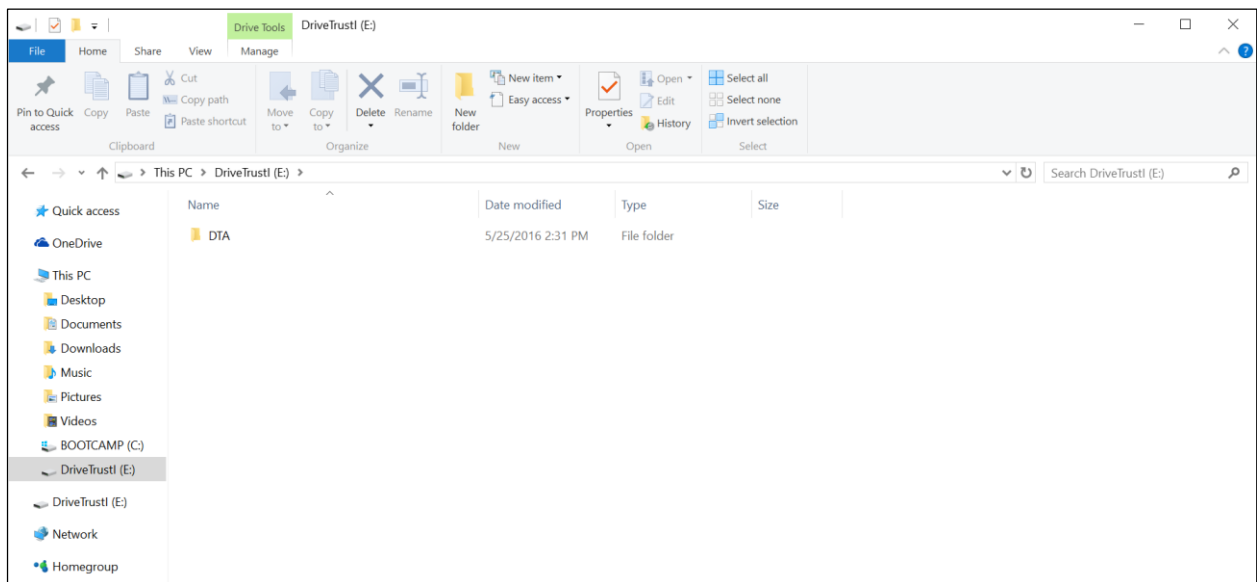


Figure 8: Mac and Windows Folders.



- (6.) Locate the `Setup64.msi` file in the Windows folder and drag it to your desktop. NOTE: IF YOU ERASE YOUR DRIVE, YOU WILL LOSE THE SOFTWARE. It is recommended that you keep a copy of the `Setup64.msi` file on your computer so that you may reinstall the software if necessary.

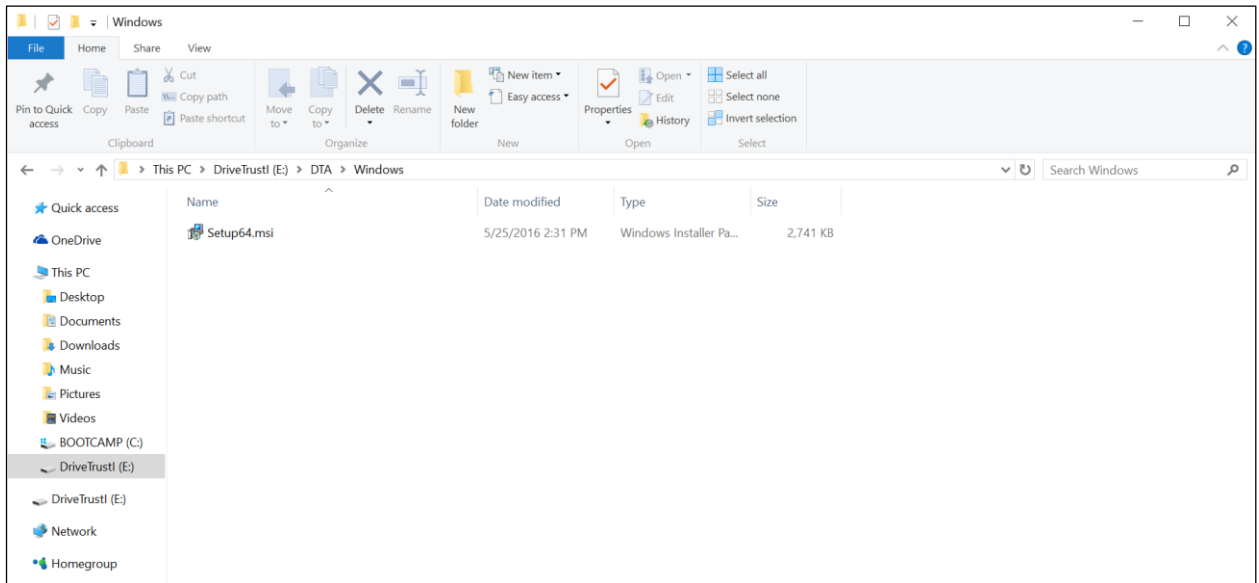


Figure 9: DTA Software Installer in Mac Folder.

- (7.) Double-click on the `Setup64.msi` file on the Desktop to run the installer.

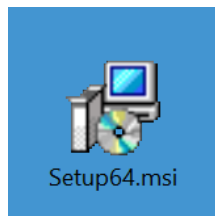
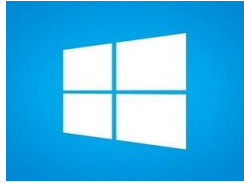


Figure 10: DTA Software Installer on Desktop.



(8.) Windows SmartScreen may warn you that you are trying to install an unrecognized app. Click on **More Info** and then **Run Anyway**.

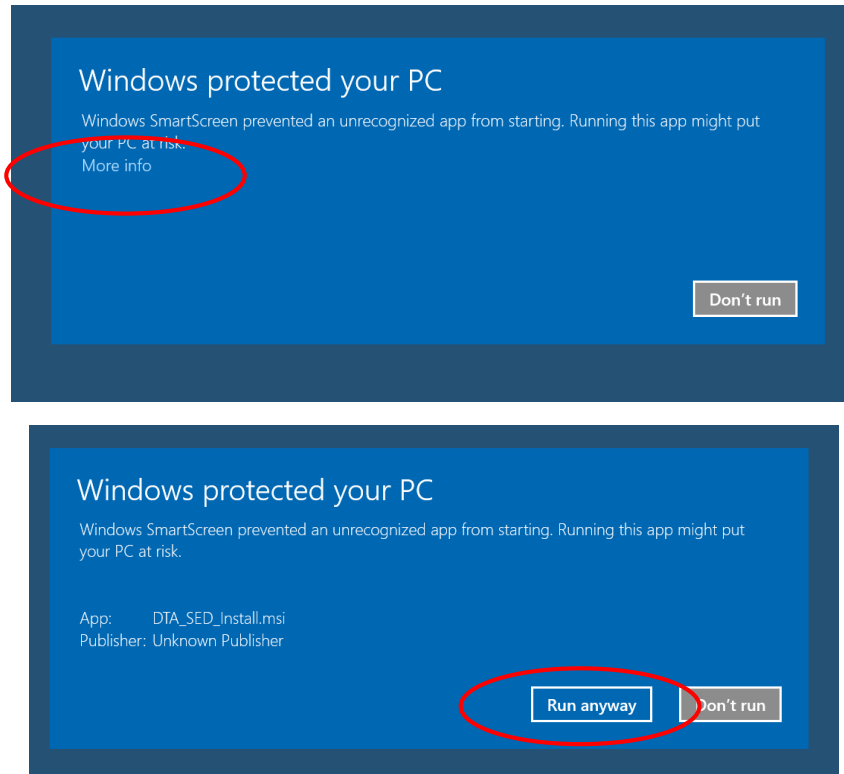
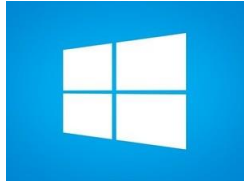


Figure 11: SED Windows SmartScreen warnings.



(9.) The SEDUtil Setup Wizard window will then appear. Click **Next**.

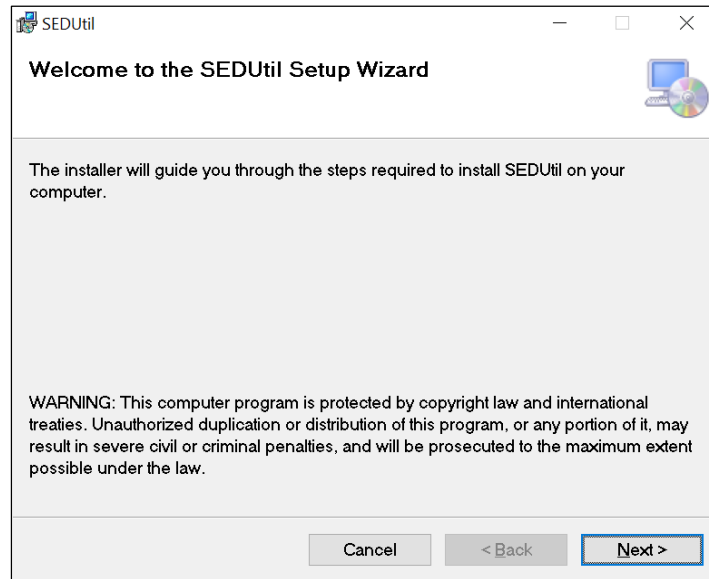


Figure 12: SEDUtil Setup Wizard window.

(10.) Review the Terms of Use Agreement.

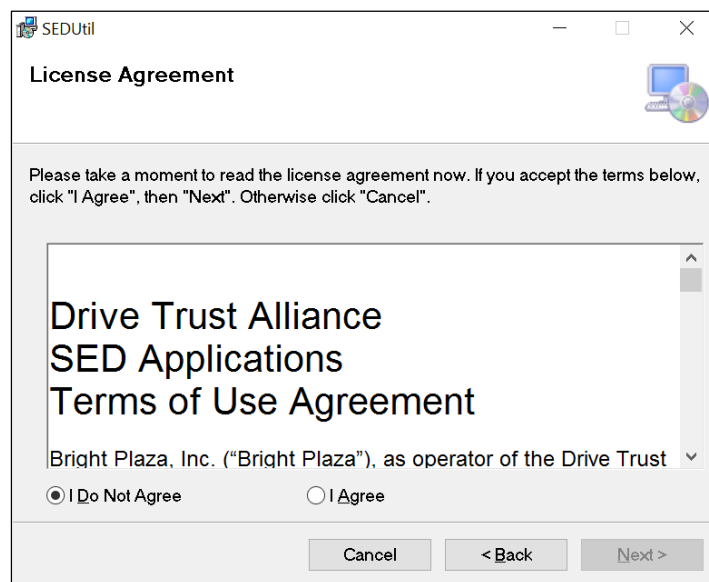


Figure 13: Terms of Use Agreement window.





- (11.) If you agree to the Terms of Use Agreement, click the **I Agree** radio button followed by the **Next** button. If not, click the **I Disagree** radio button and exit the installer.

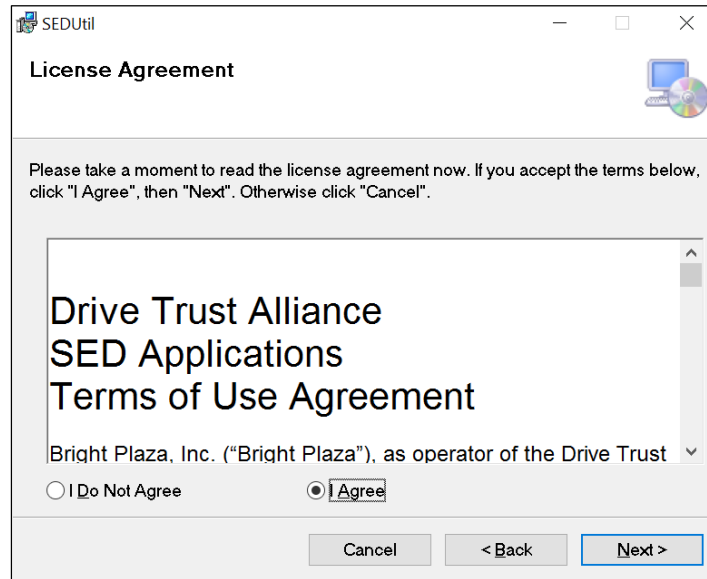


Figure 14: Agree window.

- (12.) You may then choose the directory where the software is installed, and you may select to install the software for all user accounts on the computer or just yourself. The defaults are recommended. Click **Next** after you have made your selections.

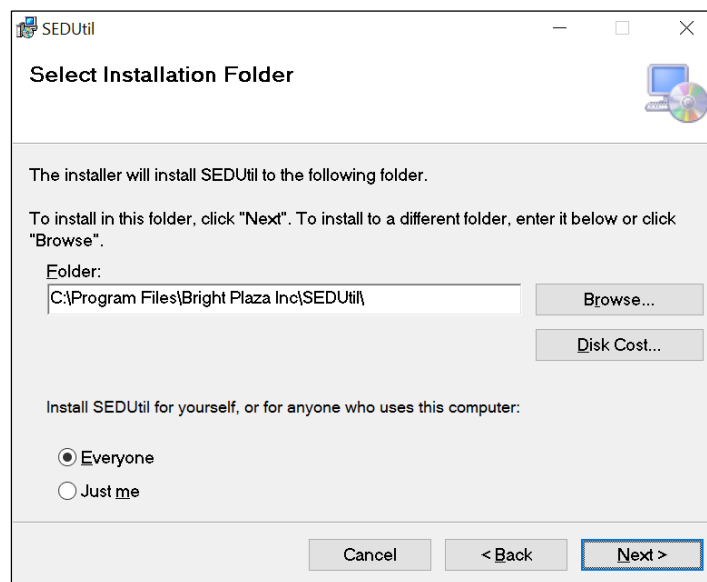


Figure 15: Install for All Users window.



- (13.) Click **Next** to begin the installation.

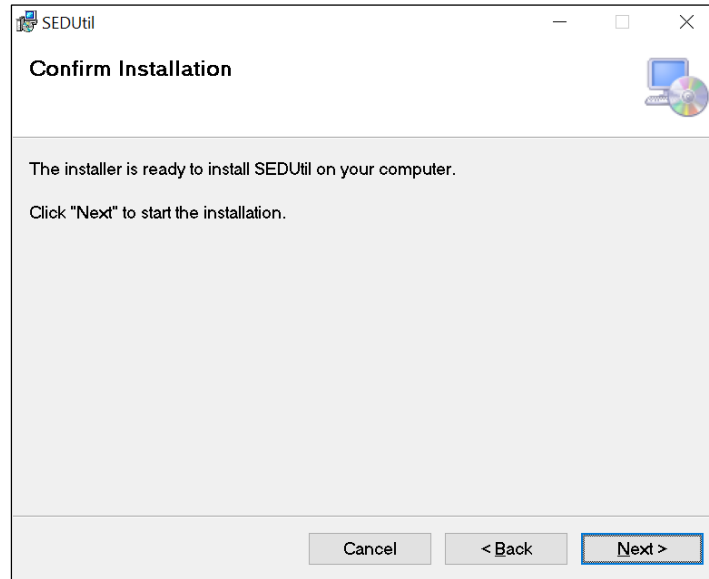


Figure 16: Install window.

- (14.) Depending upon your settings, you may receive an alert asking you if you want to allow this application to make changes to your PC. Select **Yes**.

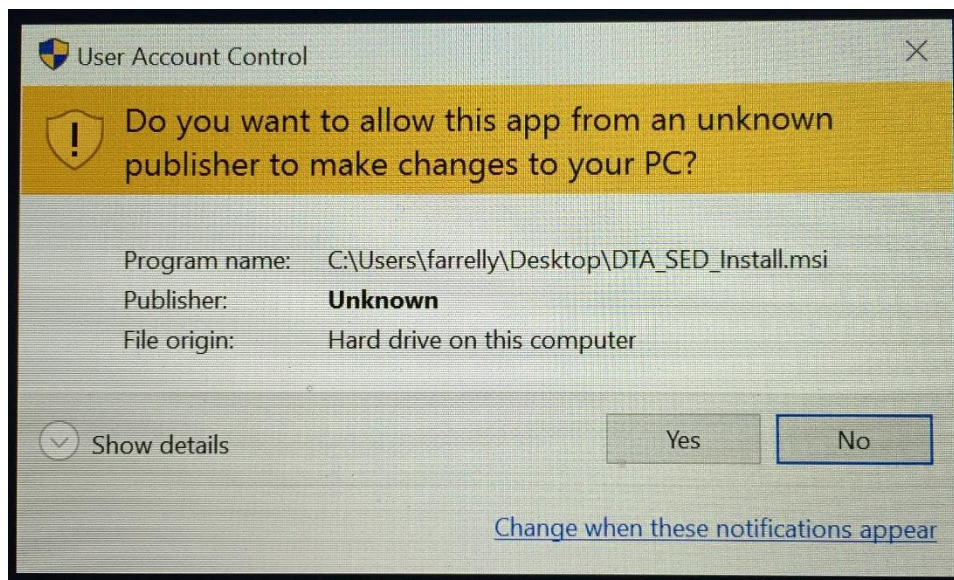
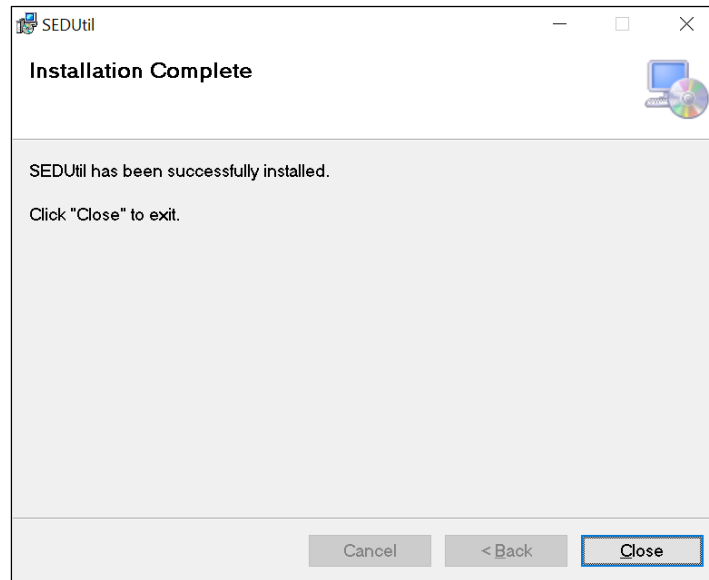


Figure 17: User Account Control window.



(15.) The software installation will begin. Disconnect the drive from your machine at the USB port.

(16.) When the installation completes, click **Close**.



*Figure 18: Installation Complete / Restart window.*

## Drive Trust Alliance Software

Upon completion of the installation, the following software programs will be on your computer:

- SEDAccess – This application is used to unlock the drive.
- SEDControl – This application is used to setup, erase, change password, lock/unlock the drive.

Operation of these application are described in greater detail below.



## Using SEDControl

To set the Locking password, you need to run SEDControl. The SEDControl program can be started in a variety of ways. You may launch SEDControl using the shortcut icon on your desktop. You may also search for “SEDControl” in the Windows Search box. You may also find it in the Program Files folder

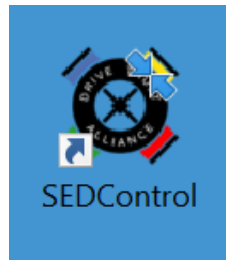


Figure 19: SEDControl shortcut on Desktop.

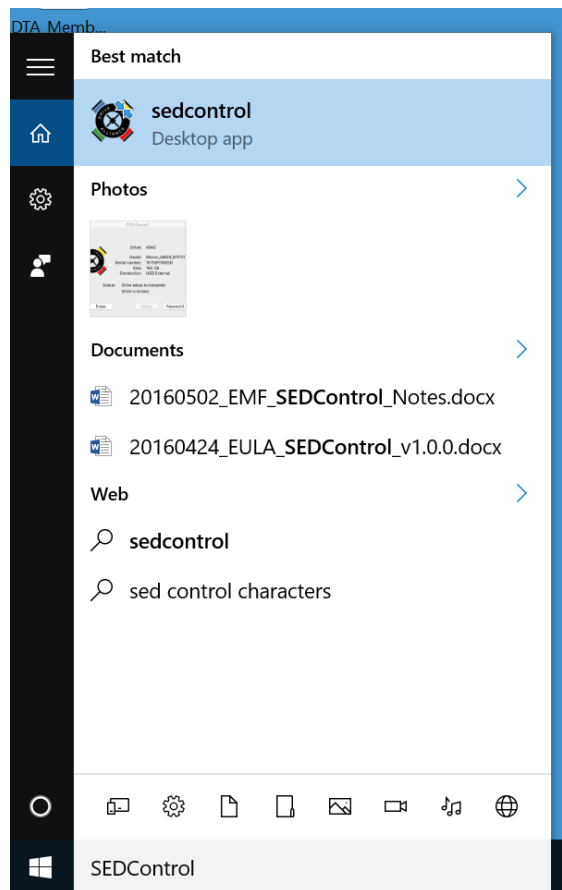


Figure 20: SEDControl in the Windows Search results.

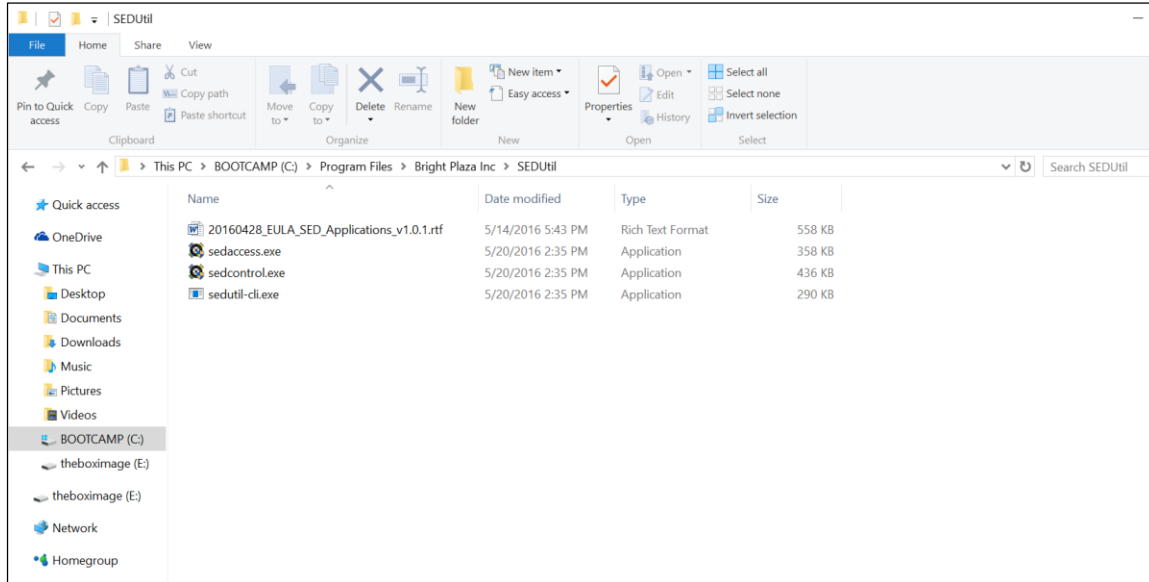


Figure 21: SEDControl in the Program Files/Bright Plaza/SEDUtil folder.

- (1.) Run SEDControl. Note, depending on the settings on you Windows computer, you will receive a message asking for permission to run SEDControl. Click **Yes**.

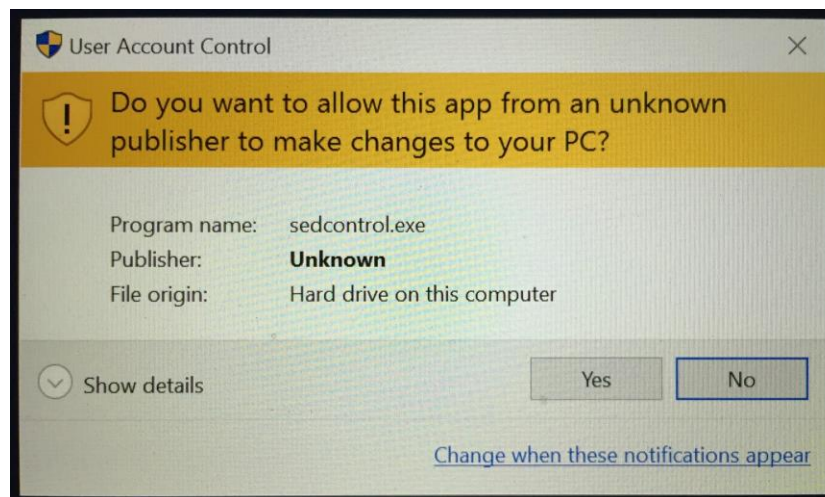


Figure 22: Window asking for permission to run SEDControl.



(2.) Then connect your drive to your computer and select the desired functions to perform on the drive.

The SEDControl application is used to perform various tasks on the self-encrypting drive, including:

- **Cancel** – Closes the SEDControl window.
- **Erase** – This erases all user data, formatting, and passwords from the drive. **MAKE SURE YOU MAKE A BACKUP COPY OF THE DTA SOFTWARE BEFORE ERASING YOUR DRIVE.** After you erase the drive, you will have to run the Setup command in SEDControl to use the drive again. You will also have to initialize and format the drive using the Disk Utility tool. Remember to format as an exFAT drive if you wish to use it on Windows as well as the Mac.
- **Setup** – Configures a new or erased SED and sets a new password for the drive.
- **Password** – Set a new password.
- **Unlock/Lock** – Unlock/Lock the drive using the password

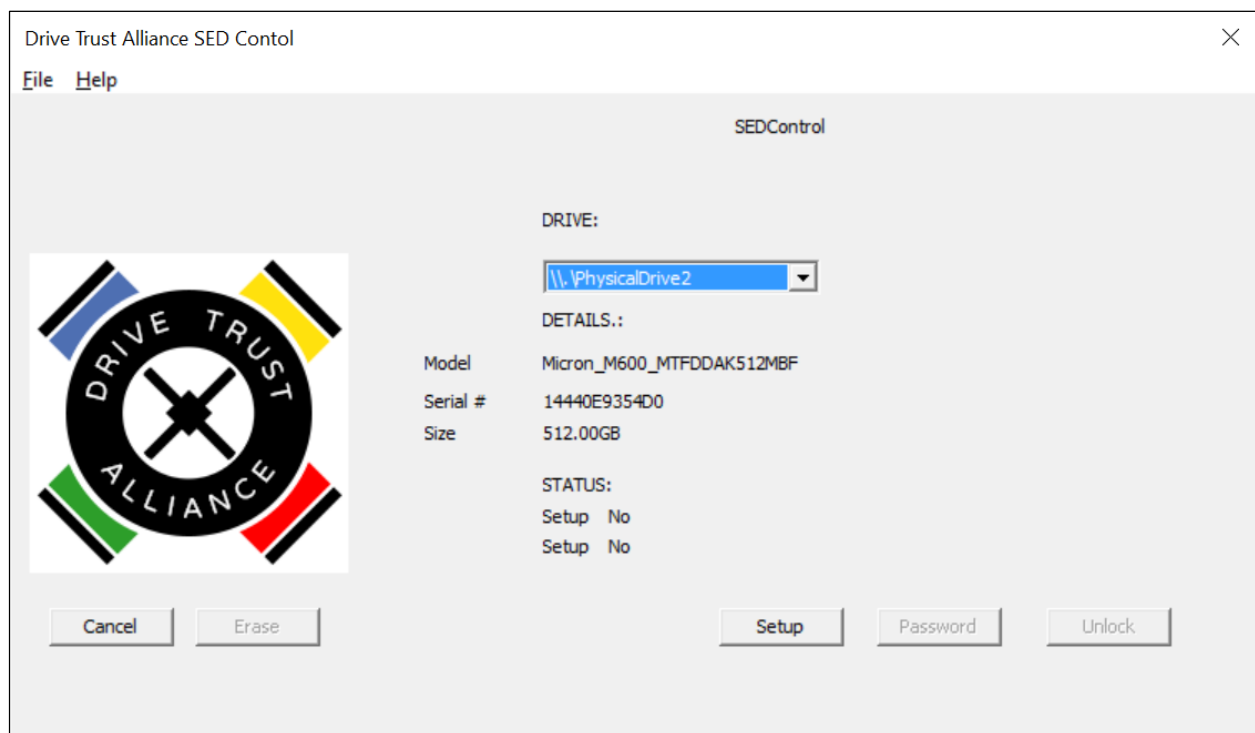
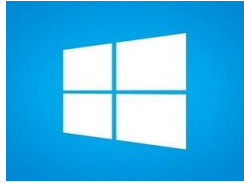


Figure 23: SEDControl GUI.

Run Setup. This will prompt you to set a password. Your drive is now locked and cannot be unlocked or erased without this password.



## Using SEDAccess

The SEDAccess application is used to simply unlock a locked drive using the password you set.

- (1.) When you reboot after installing, SEDAccess will start automatically. This is so that the program will already be running when you connect a self-encrypting drive to your computer. , you will receive a message asking for permission to run SEDAccess. Click **Yes**.

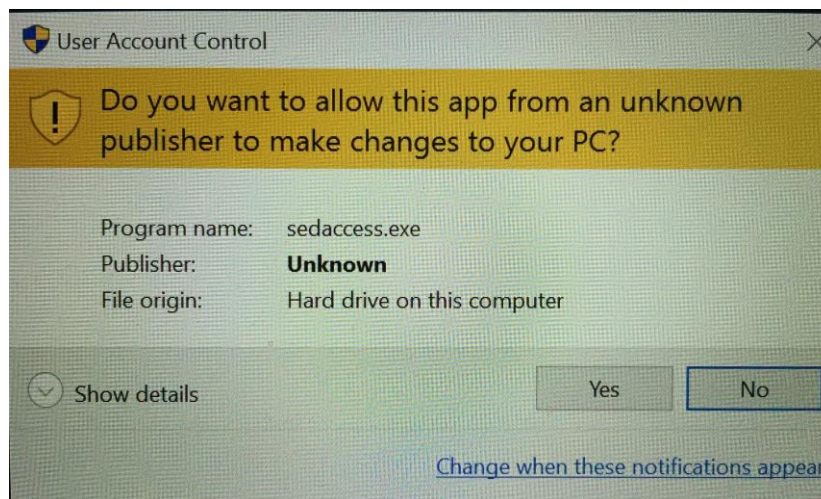


Figure 24: Window asking for permission to run SEDAccess.

- (2.) The SEDAccess program runs in the background, as indicated by the icon in the system tray.



Figure 25: SEDAccess icon in the system tray.





- (3.) Simply connect a locked SED to the computer. SEDAccess will detect the drive and request the password to unlock the drive.

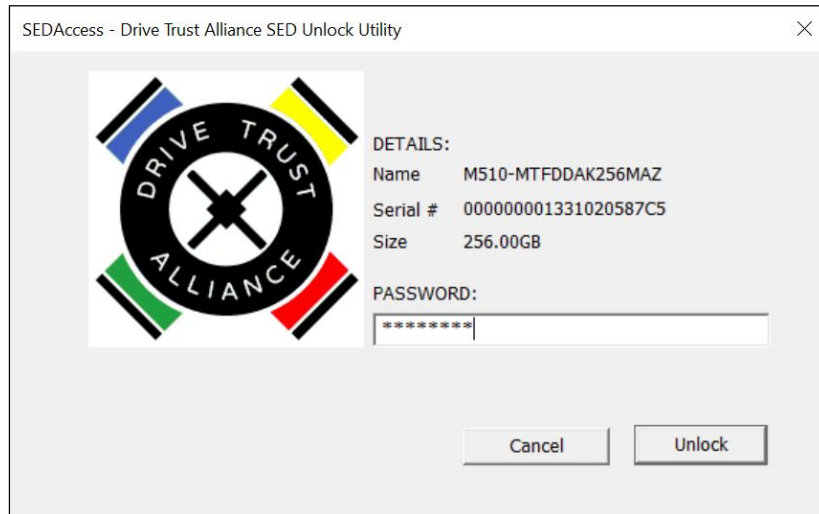


Figure 26: SEDAccess GUI.

## Help and Feedback

The DTA software on the Self-Encrypting Box is in alpha stage. We would appreciate any feedback you have on the experience with the software. Please direct all comments to [usbhelp@drivetrust.com](mailto:usbhelp@drivetrust.com). You may also submit bug reports and comments using the online webform: <https://www.drivetrust.com/contact-us-usb-help/>.

Also, we will be regularly updating a list of Frequently Asked Questions (FAQs) on our website. Simply go to <https://www.drivetrust.com/apps-help> and click on the FAQ list for the product you are using (SEDAccess, SEDControl, or SEDUtil).